

Round Stitching Wire

We manufacture round stitching wire in standard dimensions of

Nr. 16	1,60 mm	Nr. 21	0,80 mm	Nr. 26	0,50 mm
Nr. 17	1,35 mm	Nr. 22	0,75 mm	Nr. 27	0,45 mm
Nr. 18	1,20 mm	Nr. 23	0,70 mm	Nr. 28	0,40 mm
Nr. 19	1,05 mm	Nr. 24	0,60 mm	Nr. 30	0,35 mm
Nr. 20	0,90 mm	Nr. 25	0,55 mm		

and special dimensions from 0.35 mm to 1.6 mm diameter

- as bright wire or with copper-coated, zinc-coated, tin-coated and coloured finish
- On all standard spools from 2 to 1,000 kg
- In spooled coils and catchweight coils up to 45 kg
- In drums from 40 to 300 kg

As a supplement to our product range, we also offer pay-off-systems



Flat Stitching Wire

We manufacture flat stitching wire in standard dimensions of

Nr. 0	0,70 x 0,30 mm	Nr. V	0,90 x 0,65 mm
Nr. I	0,75 x 0,35 mm	Nr. VI	0,97 x 0,78 mm
Nr. II	0,75 x 0,45 mm	Nr. VII	1,12 x 0,91 mm
Nr. III	0,75 x 0,55 mm	Nr. VIII	1,27 x 1,05 mm
Nr. IV	0,80 x 0,65 mm	Nr. IX	1,50 x 1,16 mm



and in the corresponding special dimensions

- As bright wire or with copper-coated, zinc-coated or tin-coated finish
- On all standard spools from 2 to 20 kg
- In coils from 2 kg

Flat Ribbon Stitching Wire

We manufacture flat ribbon stitching wire in any desired dimensions:

wide	1,8 - 3,5 mm	thickness	0,2 - 0,9 mm
-------------	--------------	------------------	--------------

- As bright wire or with copper-coated or zinc-coated finish
- On all standard spools from 2 to 150 kg
- In coils from 2 to 60 kg



Other Stitching Wire Types

As a supplement to our stitching wire range, we also offer the following wire types:

- Crate stitching wire
- Paper staple wire
- Paper clip wire

- On all standard spools from 2 to 1,000 kg
- In spooled coils and catchweight coils up to 45 kg
- In drums from 40 to 300 kg

Wire Pay-Off Systems

As a special service, we offer wire pay-off systems for the following spools:

- SD spools: Pay-off system with rotating finger and adjustable brake for overhead pay-off
- BB 20 spools: Pay-off system with rotating finger and adjustable brake for overhead pay-off
- K 355 spools: Pay-off system with rotating finger and adjustable brake for overhead pay-off
- K 355 spools: Roller pay-off system for rotating pay-off; prevents torsion in the wire
- K 355 spools: Brush pay-off system with double brush braking device for optimum overhead pay-off
- MP 100 spools: Brush pay-off system with double brush braking device for optimum overhead pay-off



Spiral Wires

Our product range comprises spiral wires for spiralling machines and wire comb forming machines in the dimensions of:
0,7 mm to 1,2 mm.

Moreover, we offer calendar suspension wires in the dimensions of:
1,5 mm to 2 mm.

These articles are available in

- bright, zinc-coated, copper-coated, tin-coated and nylon-covered (coloured) design
- on all standard spools from 2 to 800 kg
- in drums from 40 to 300 kg.



Baler Wire

We offer baler wire in sizes from
2 mm to 3,4 mm

in spooled coils of 20 and 40 kg and in coils up to 150 kg.

We supply binding wire in sizes from
0,4 mm to 2 mm

in coils and spools.

In addition, we also manufacture steel strapping wire.



Brush Wire

We manufacture brush wires as:

- bright, copper-coated, zinc-coated, tin-coated, brass and nickel-silver
- in all standard sizes.

We supply brush wire

- On spools from 2 to 500 kg
- In coils from 6 to 45 kg
- In drums from 40 to 300 kg

We supply anchor wire on spools up to 15 kgs.



Clip, Lable, Flower Wire

We supply clip wire

- Annealed or with soft zinc coated or soft tin-coated finish
- On spools from 15 to 20 kg
- In coils from 6 to 45 kg
- In drums from 40 to 300 kg

We deliver label wire

- Annealed or with soft zinc coated or soft tin-coated finish
- On coils from 1 to 15 kg.

We offer flower wire

- As bright wire or with copper-coated, zinc-coated or tin-coated finish
- On coils from 200 g to 15 kg
- In rings of 15 kg



Special Products

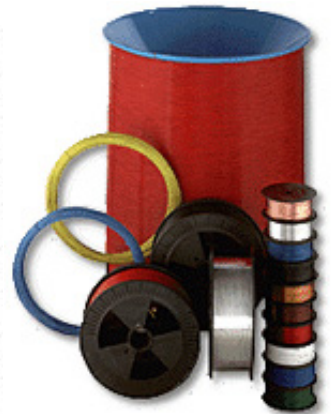
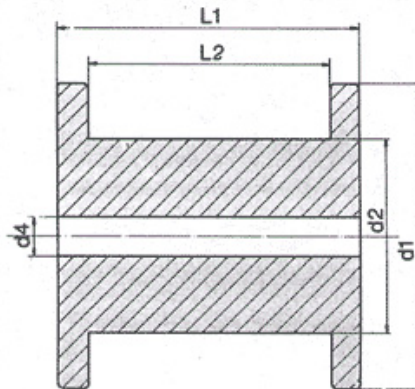
If you haven't found the wire you are looking for in the list above, please contact our competent specialist personnel.

We can offer you a wide range of special products, such as:

- Round and flat wire in iron and steel grades in the dimensions to suit your requirements, as bare wire or with copper-coated, zinc-coated or tin-coated finish.
- Flat and round wire rods in various dimensions and lengths
- Balloon carrier wire as bare wire or with copper-coated, zinc-coated or tin-coated finish or with coloured nylon sheath.
- Special wire for flexible parts such as springs and hooks

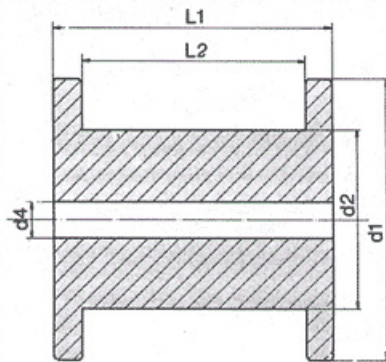


Small Spools



type of spool	flange d1	core d2	boring d3	total width l1	winding width l2	filling weight
SD 100/40	100	40	16	45	39	1 kgs
2 kg spool	135	55	16	48	42	2 kgs
P 5	135	67	18	52	47	2,5 kgs
3 kgs ST spool	140	90	17	90	70	3 kgs
3 kgs spool	150	52	18	48	42	3 kgs
K 160	160	100	22	160	128	4 kgs
5 kgs spool	155	70	17	63	57	5 kgs
150 double spool	150	52	18	100	91	5 kgs
P 10	170	67	18	52	47	5 kgs
DS 200 K	200	100	51	55	45	5 kgs
DY 200/58	200	76	67	56	47	10 kgs
10 kgs ribbon spool	225	75	67	60	55	10 kgs
11 kgs B 20	200	100	46	115	100	11 kgs

Big Spools



type of spool	flange d1	core d2	boring d3	width l1	winding width l2	filling weight
K 200	200	125	22	200	160	15 kgs
BB 20	200	110	32	180	163	15 kgs
SD 15	300	212	51	103	91	15 kgs
SH 390 K	395	315	305	90	82	20 kgs
20 kgs ribbon spool	224	106	99	95	85	20 kgs
K 250	250	160	22	200	160	25 kgs
SD 20	300	180	51	103	85	20 kgs
SH 460 K reel spool	460	319	305	105	91	45 kgs
K 355	355	224	36	200	160	45 kgs
MP 80	355	224	127	338	298	80 kgs
MP 100	355	224	127	355	315	100 kgs
FB 100	355	219		370	280	100 kgs
150 kgs wooden spool	560	300	56	186	140	150 kgs
200 kgs wooden spool	500	320	128	450	390	200 kgs
FB 500	570	305		635	400	420 kgs
FB 800	800	450		635	315	750 kgs
SW 500 wooden spool	600	360	80	600	550	800 kgs
RP 1000 wooden spool	1.000	630	82	480	410	1.000 kgs